



→ The KB e-Depot

Workflow Management in an Operational Archiving Environment

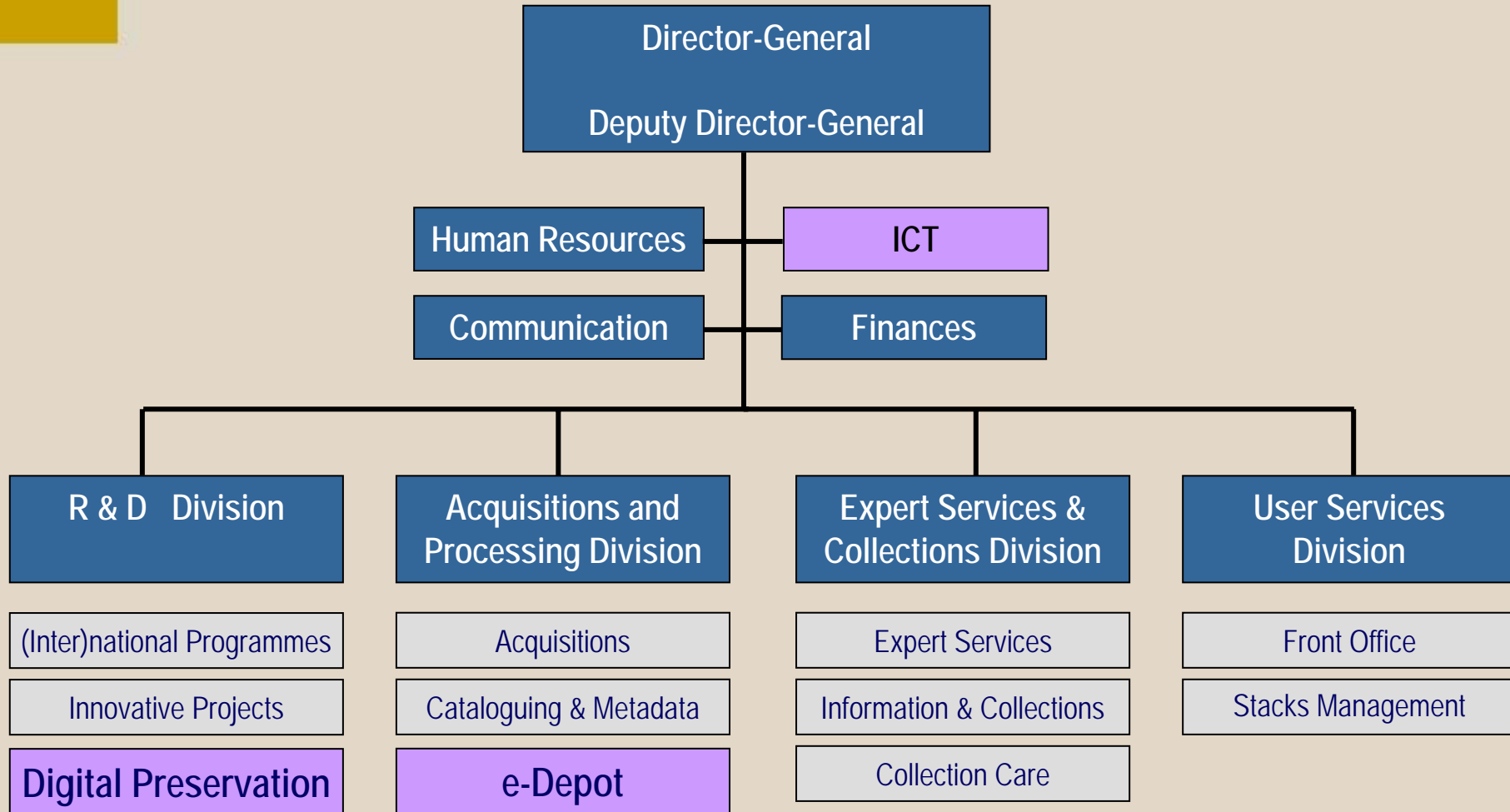
Johan Stapel, Head e-Depot

*iPRES - International Conference on Preservation of
Digital Objects, Göttingen*

September 15, 2005



Organisation and Policy



Mission of the e-Depot:

Mission of the Koninklijke Bibliotheek:

- Ensuring permanent availability of information and knowledge

This yields:

- Long-term preservation and accessibility of electronic publications
- Safeguarding authenticity & integrity
(once in the archive, never deleted or changed)
- Development of ever changing preservation and accessibility toolbox
- To become a dedicated and trusted institution, providing permanent access



Facts & Figures

What is the e-Depot?

- Electronic version traditional depository
- Developed in collaboration with IBM
- Technical heart: DIAS (OAIS-compliant)
- Integrated with other library modules
- Ingest of on-line journal articles, e-books, and CD-roms (installables)
- Operational since March 17, 2003



Some figures:

- Current holdings 2005:
 - 4 Terabyte
 - 2.200 on line journals
 - 3.700.000 electronic publications
- Processing capacity depends of the input:
 - 50.000 publications per day



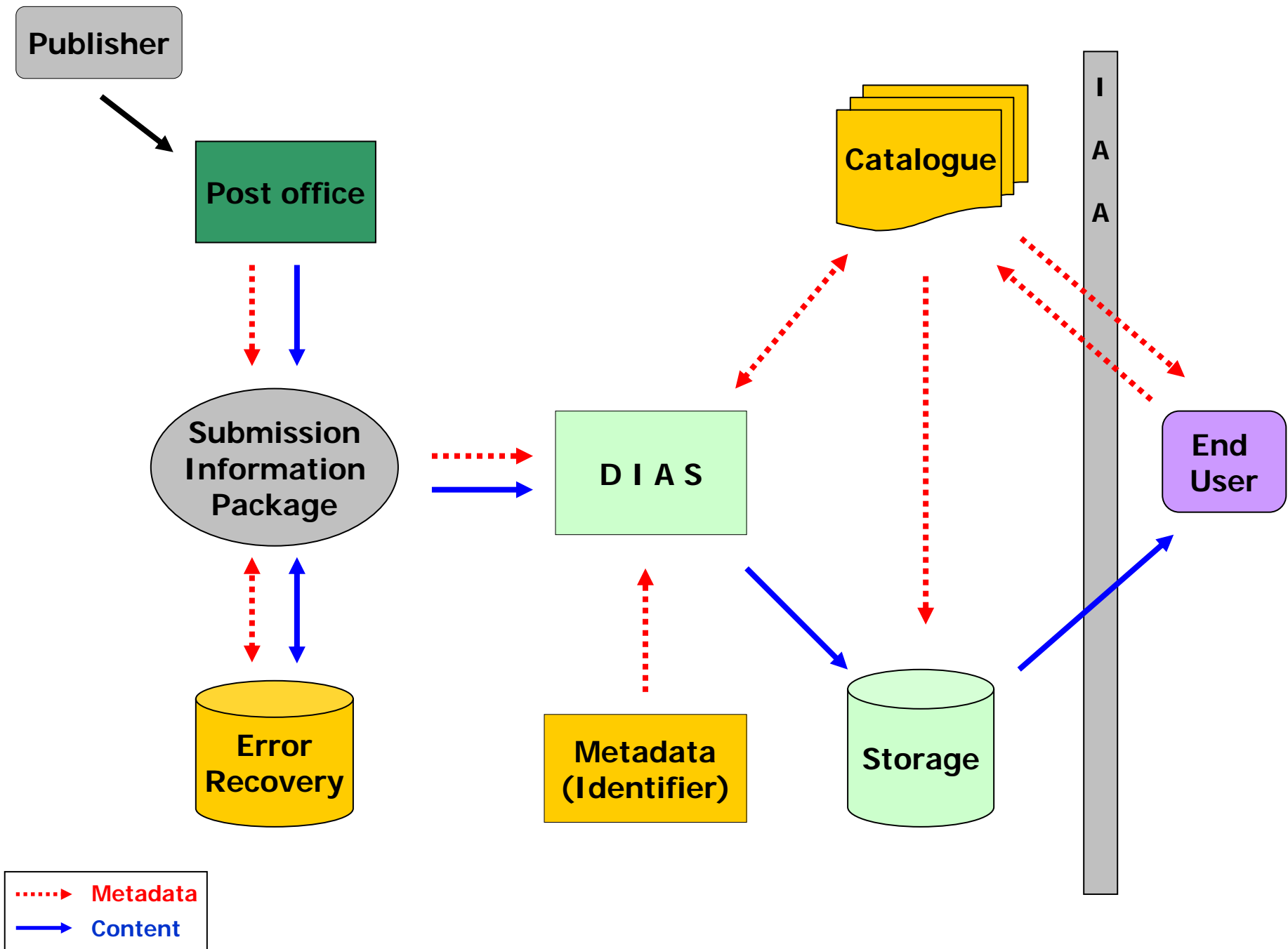
Workflow

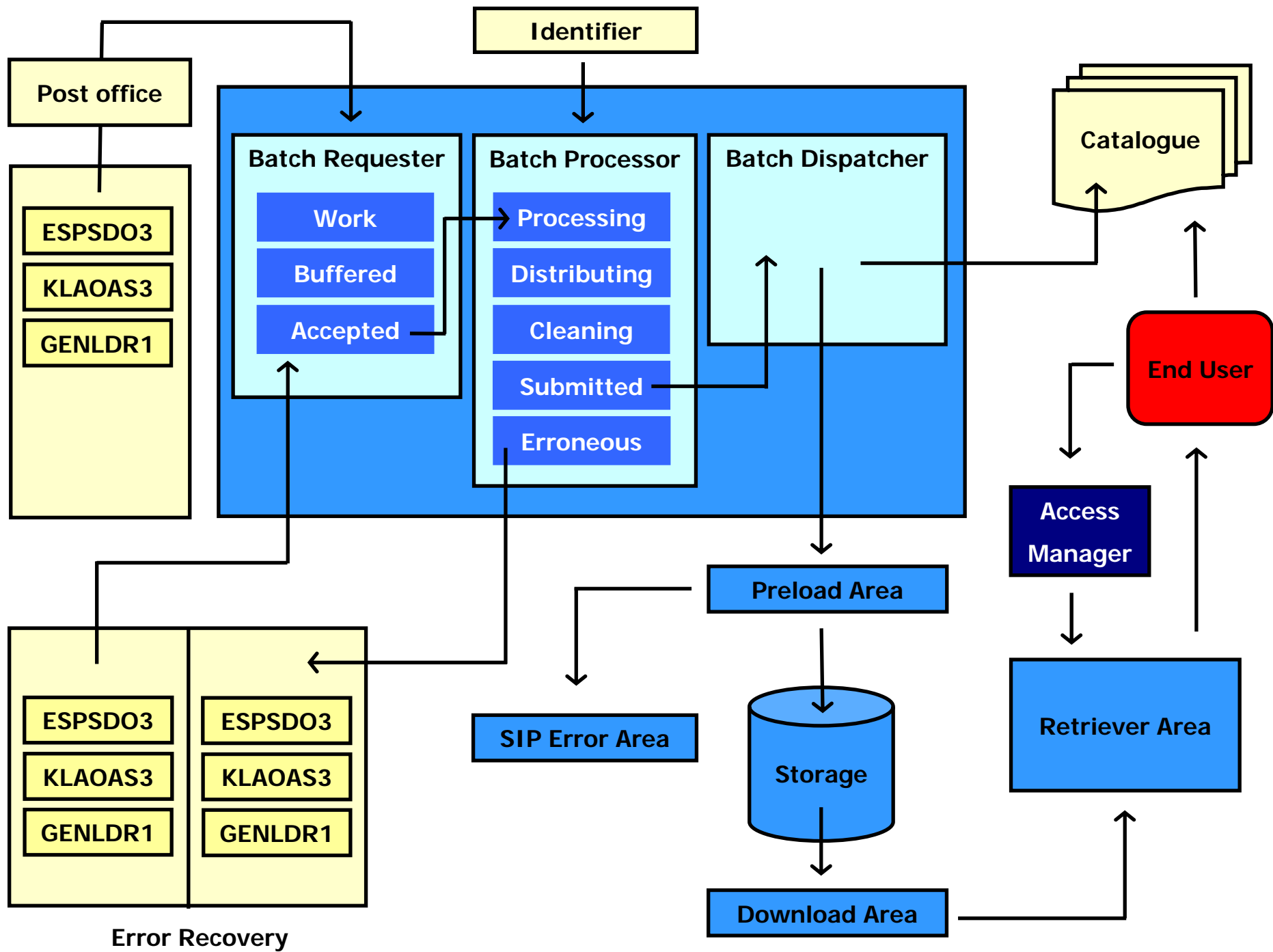
Overview

- Infrastructure functions:
 - accepting and pre-processing of the publications
 - generating and resolving identifier numbers
 - searching and retrieving publications
 - identifying, authenticating and authorising users
- Publication types:
 - Off-line media / installables
 - On-line media

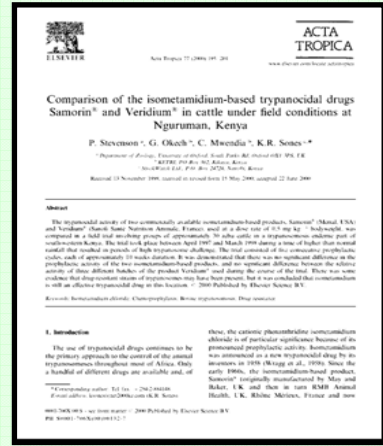
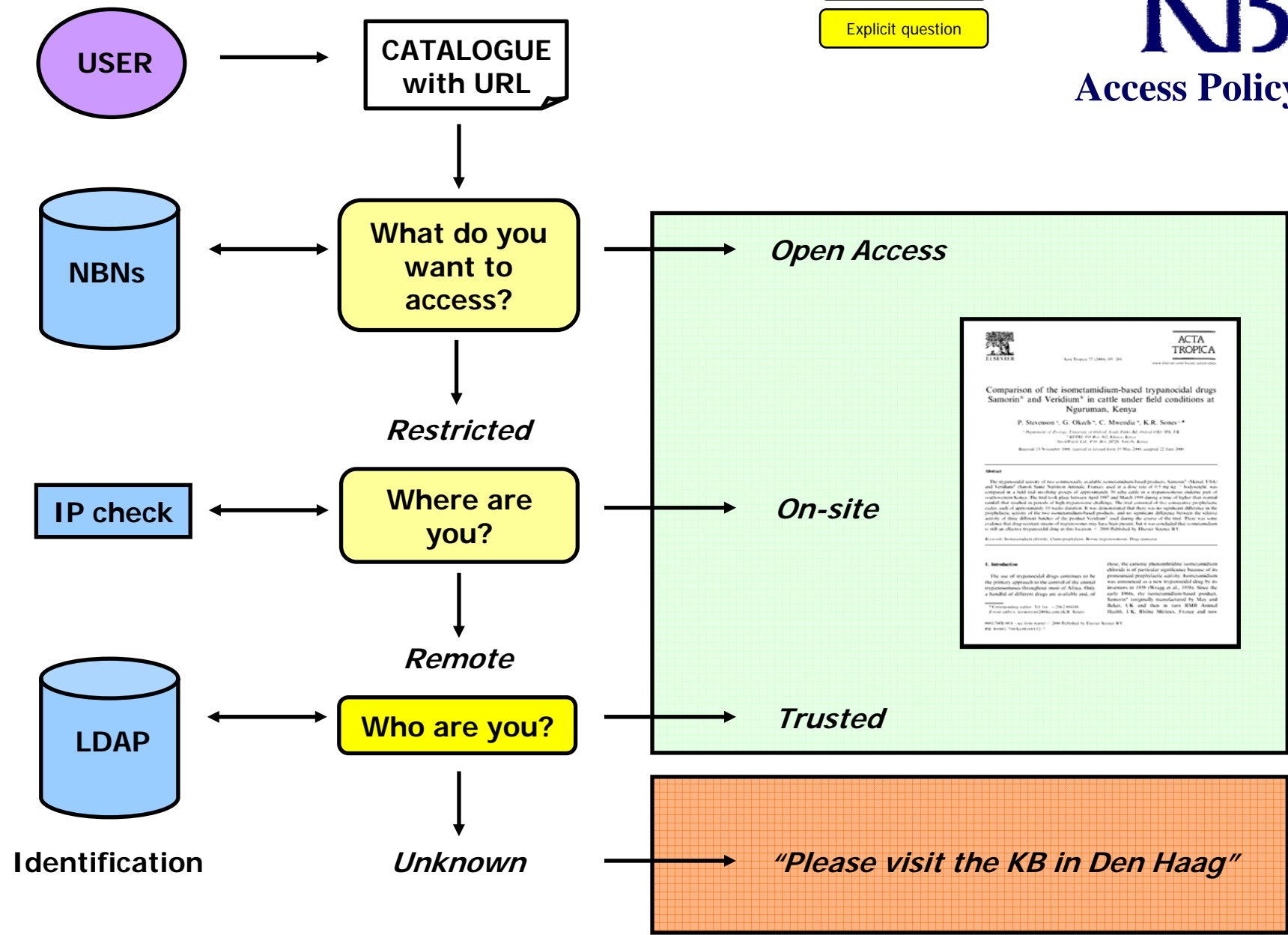
Off-line media / installables

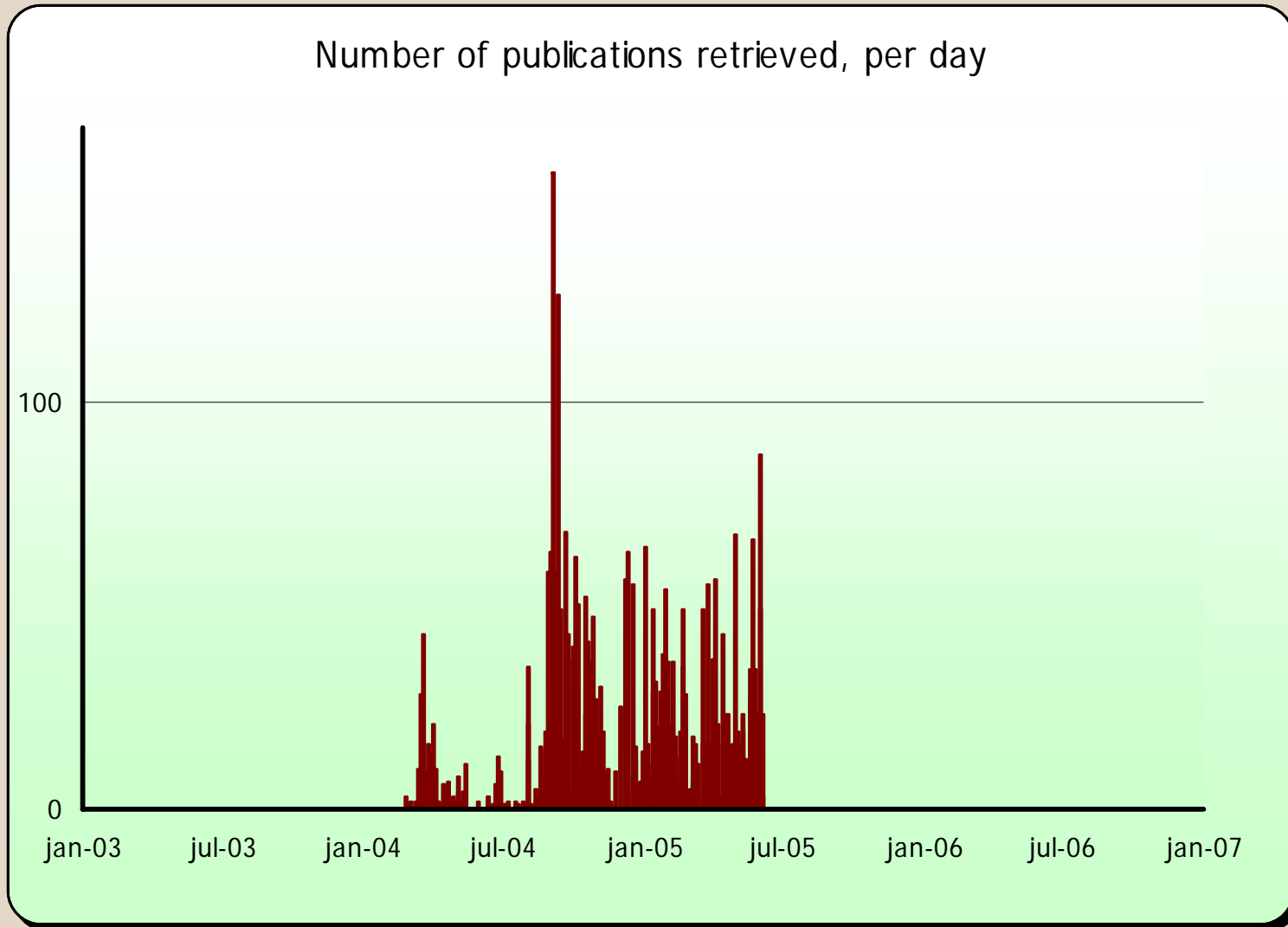
- Manual processes:
 - 1 Complete installation of CD-ROM
 - 2 Copy to stand-alone Reference Workstation (RWS)
 - 3 Create image, including operating system
 - 4 Create bibliographic description
 - 5 Load image in DIAS system





Implicit question
Explicit question





Summary

- KB preserves authentic digital publications in the e-Depot
- The e-Depot is an archive dedicated to
 - Storage
 - Access
 - Digital Preservation
- The KB e-Depot as a safe place for the records of science



Questions...?

**johan.stapel@kb.nl
barbara.sierman@kb.nl**

www.kb.nl/e-depot